



View across a Hillside Cistern located proximal to Wilson City



Second View of Cistern illustrating smooth upper walls





View of remnant of a structure at Wilson City



Second view of remnant of a structure at Wilson City





View of Mangroves looking south across utility corridor



View of Mangroves looking west from Wilson City Road





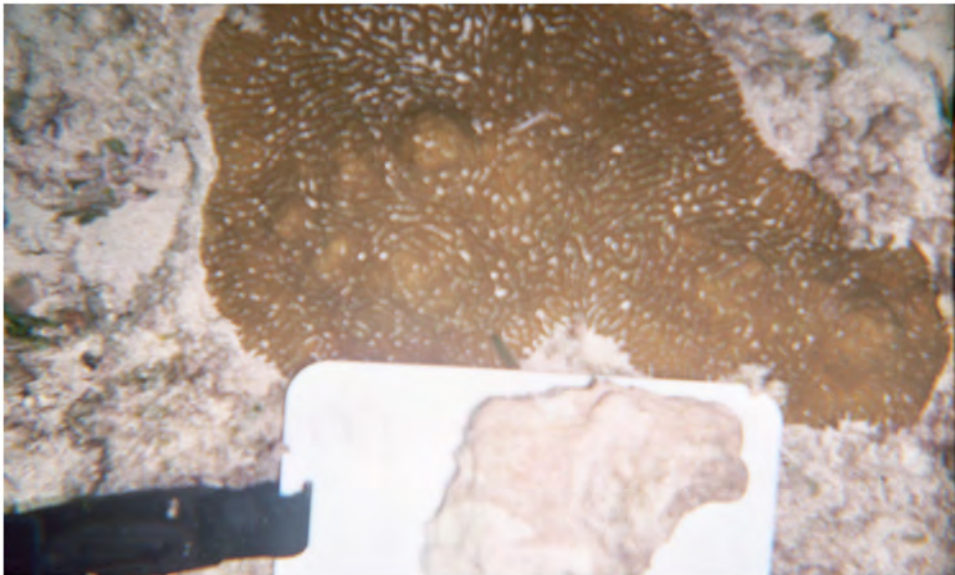
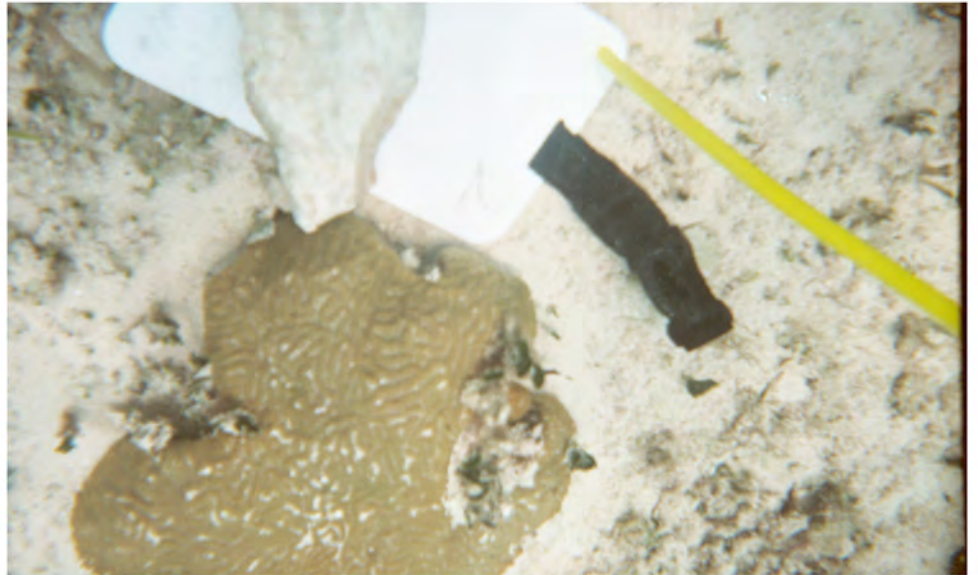
View of Mangroves looking south across utility corridor



View of Mangroves looking west from Wilson City Road



Photographs 7-1 Stony Coral Species Encountered in Sea of Abaco

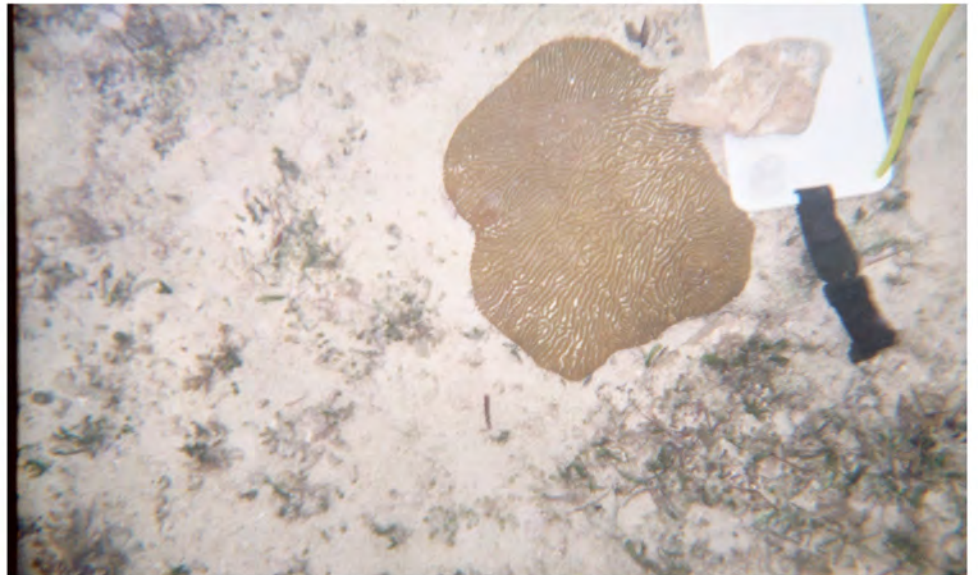
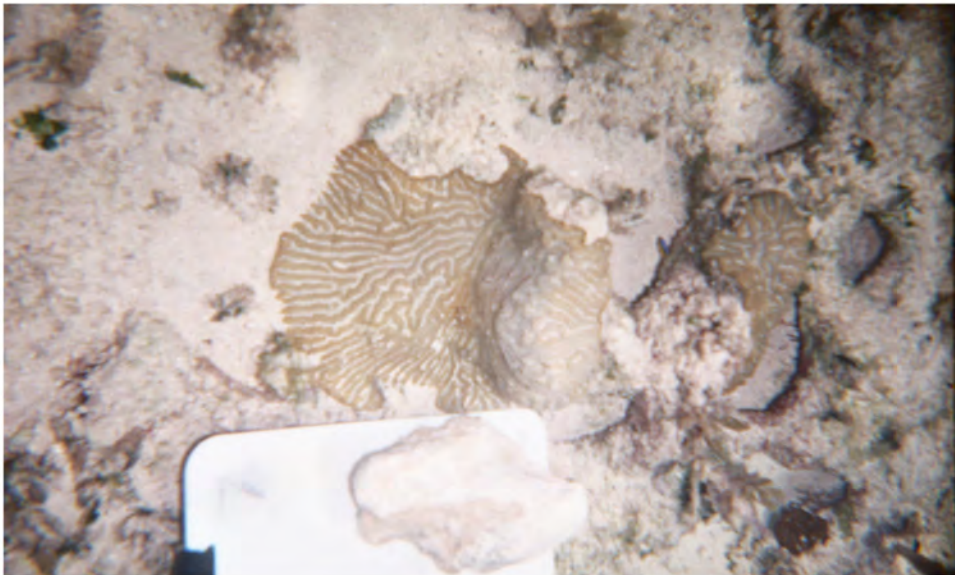


Stony Coral Species 15 cm or Greater listed in Table 7-3

Photographs illustrating examples of Knobby brain coral#1; Symmetrical brain coral#2; Knobby brain coral#3 and Symmetrical brain coral#4



Photographs 7-2 Stony Coral Species Encountered in Sea of Abaco

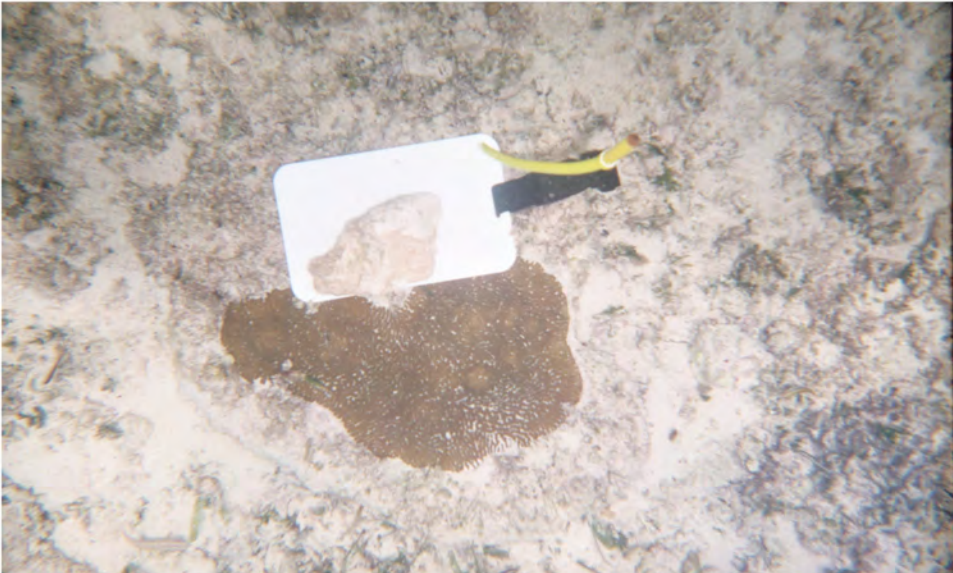
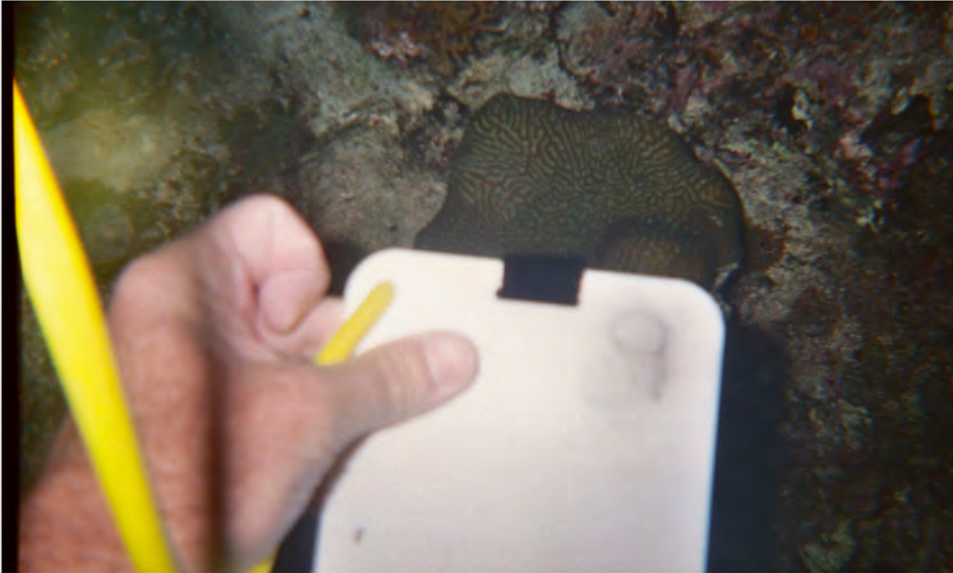


Stony Coral Species 15 cm or Greater listed in Table 7-3

Photographs illustrating examples of Symmetrical brain coral#5;Knobby brain coral#6;Knobby brain coral#7 and Symmetrical brain coral#8



Photographs 7-3 Stony Coral Species Encountered in Sea of Abaco



Stony Coral Species 15 cm or Greater listed in Table 7-3

Photographs illustrating examples of Knobby brain coral#9; and additional photographs of coral referenced on Table 7-3





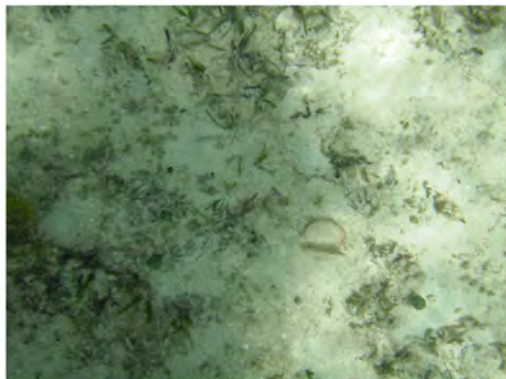
Fire Coral



Large Ivory Coral



Mat Zoanthid



Sand Flat with green algae



Mat Zoanthid



Knobby Brain Coral



Fuzzy Finger Algae



Fire Coral



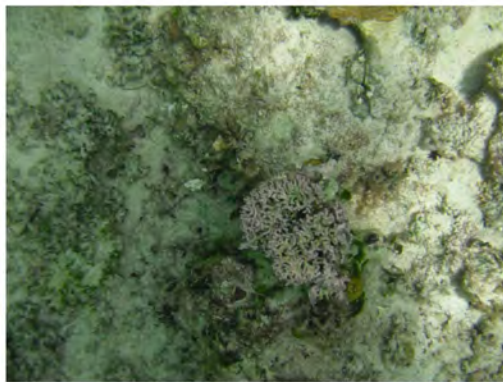
West Indian Sea Egg



Mat Zoanthid

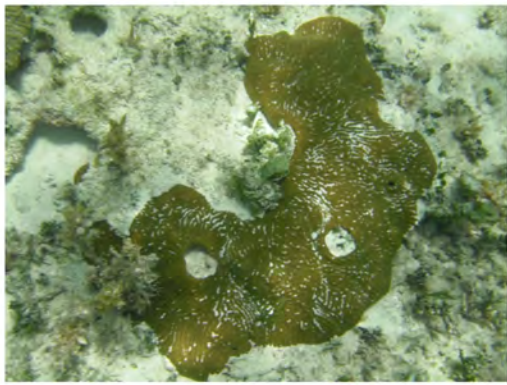


Black-ball Sponge



Large Ivory Coral





Knobby Brain Coral



Symmetrical Brain Coral



Knobby Brain Coral



Fire Coral



Common Comet Star



Cushion Sea Star



Queen Conch



Donkey Dung Sea Cucumber



Symmtrical Brain Coral



Schoolmaster, Grunt, Sergeant Major  
and Blue Tang



Moon Jellyfish



Schoolmaster, Grunt, Sergeant Major